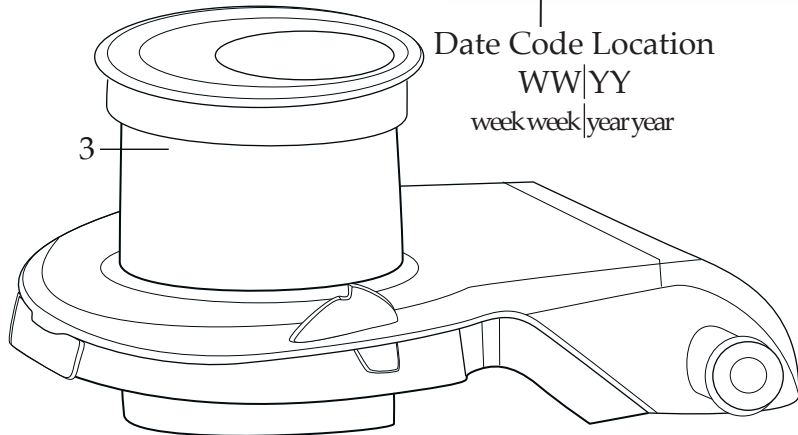
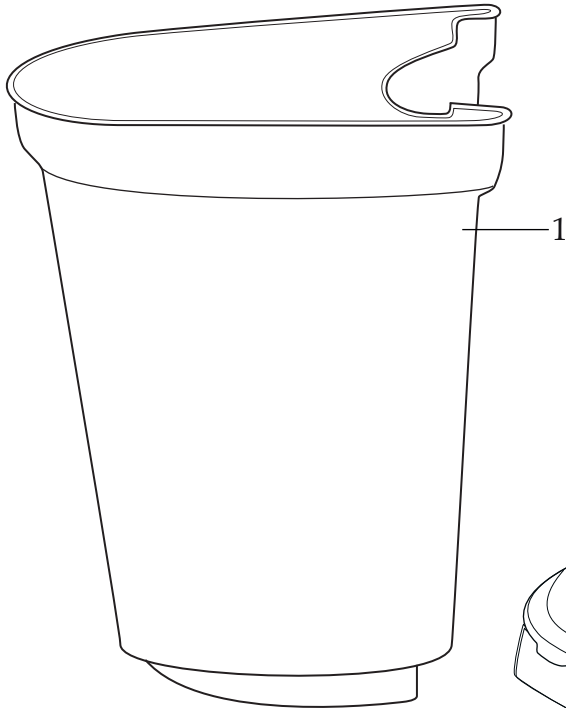
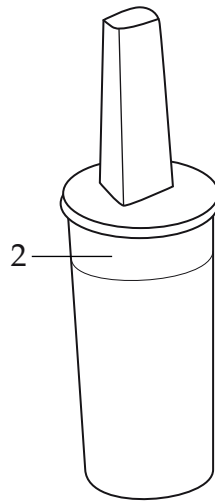
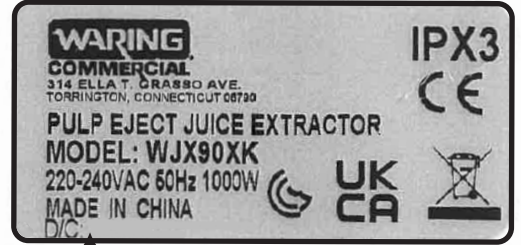




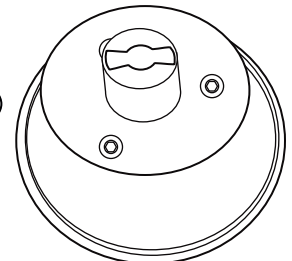
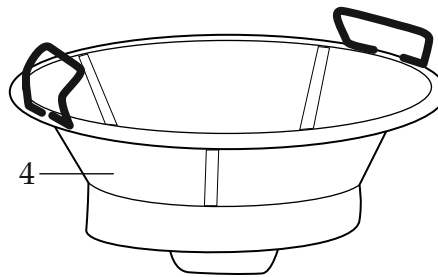
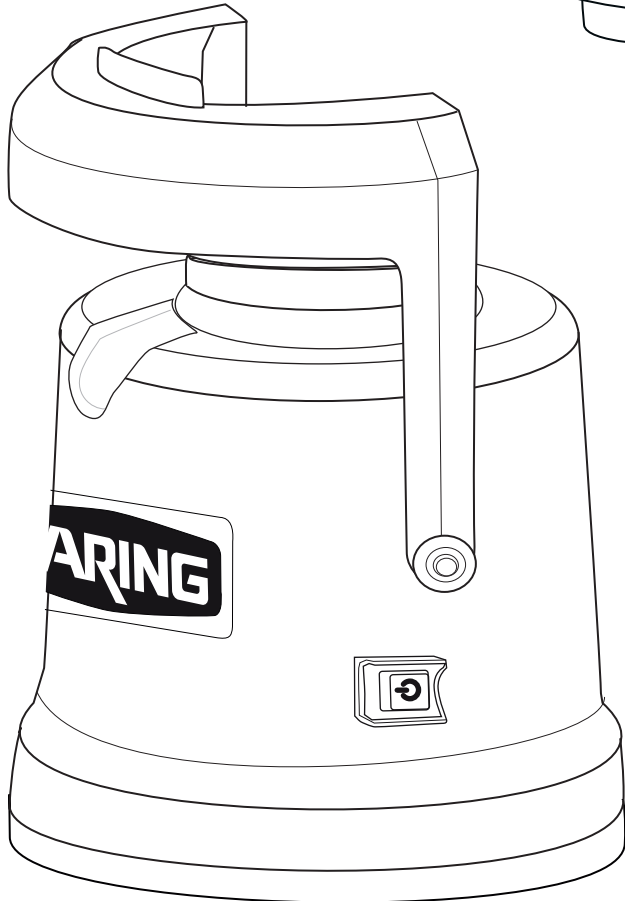
WARING COMMERCIAL®

UK Pulp Eject Juice Extractor

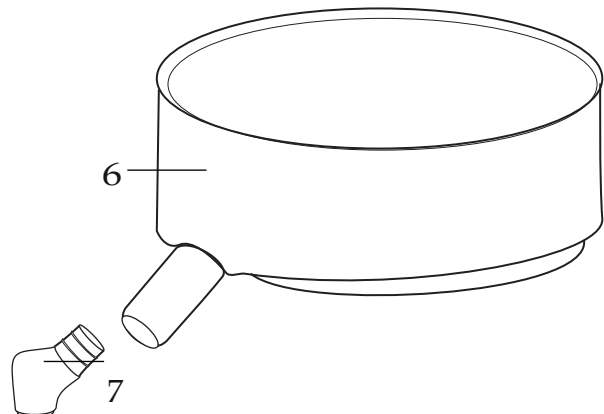
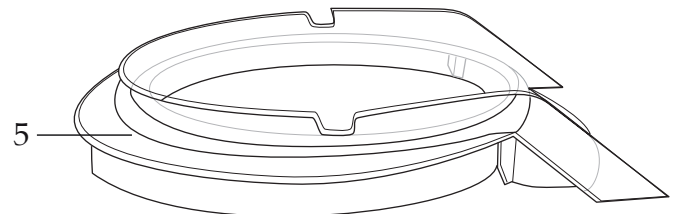
WIX90XK



Date Code Location
WW|YY
week week | year year

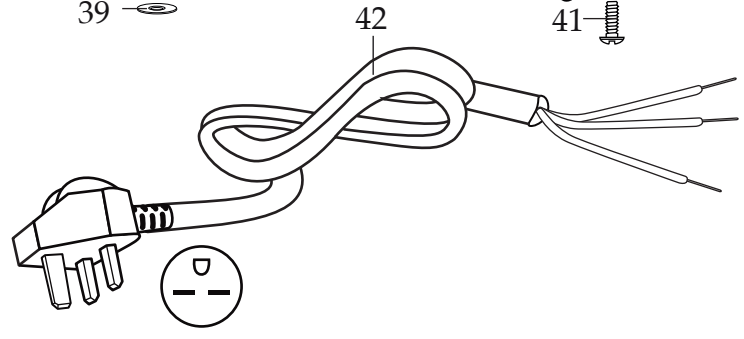
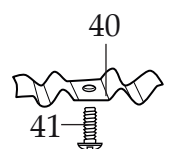
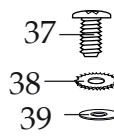
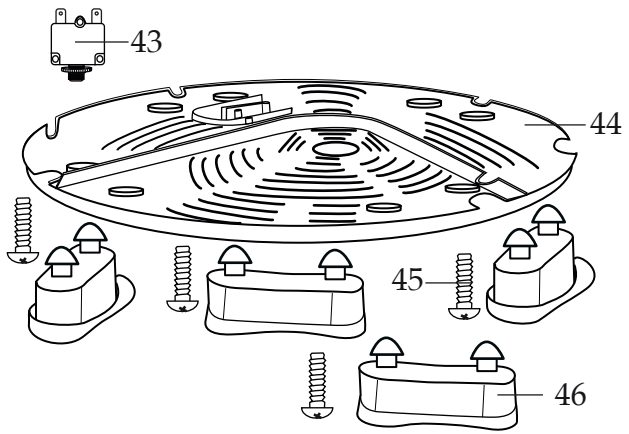
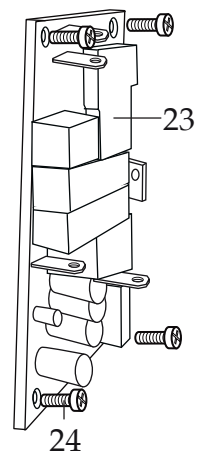
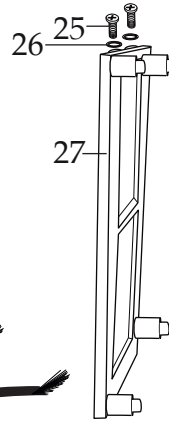
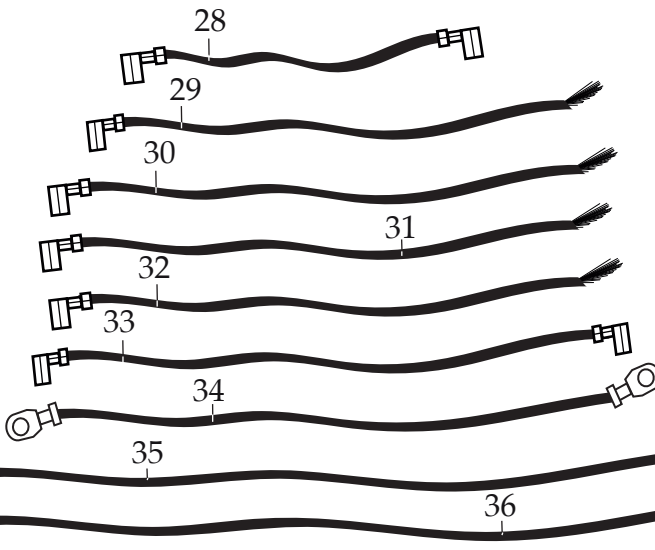
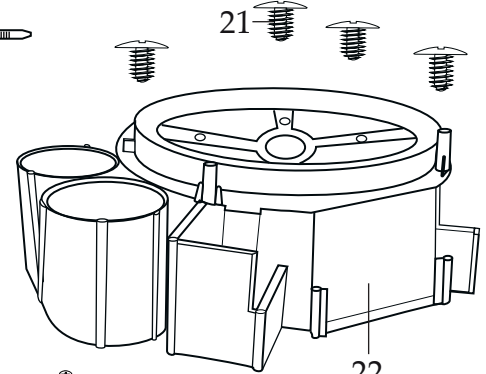
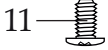
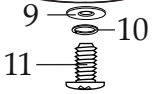
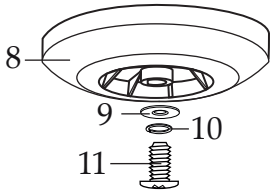
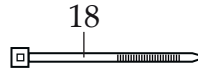
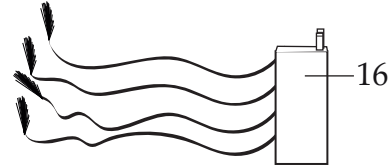
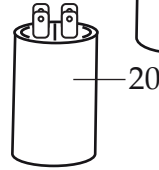
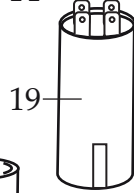
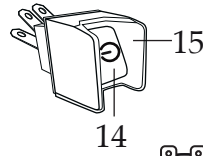
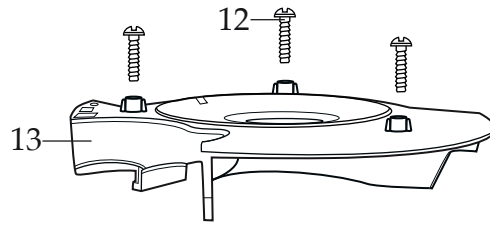
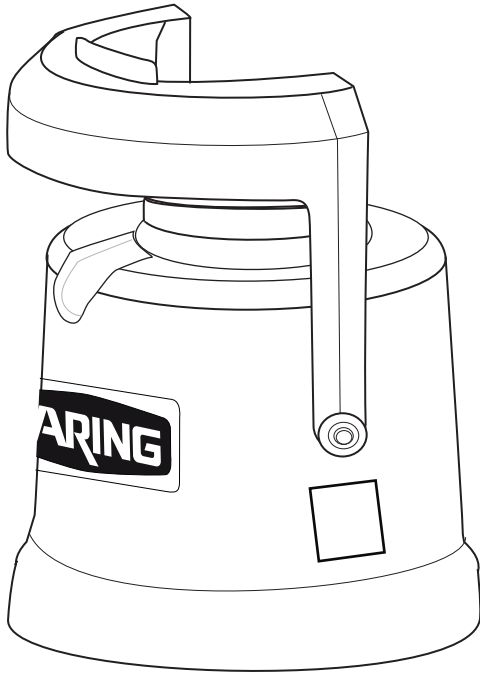


Strainer Bottom View



WARING COMMERCIAL[®]

Base Unit Components
WJX90XK



Illustration#	Part#	Description
1	037239	Pulp Container
2	038522	Black Pusher
3	038523	Cover
4	038524	Basket Assembly
5	037243	Black Upper Bowl
6	037244	Bowl
7	037245	Spout Cover
8	037255	Motor Fan
9	037254	Washer / stainless steel
10	037253	Spring Washer
11	037252	Screw
12	037265	Screw (3 required)
13	037266	Motor Bracket
14	038526	Switch
15	038527	Switch Guard
16	028534	Thermal Relay Switch
17	012409	Small Crimp Connectors (3 required)
	019123	Large Crimp Connectors (2 required)
18	013731	Wire Ties (6 required)
19	038528	Capacitor (white)
20	038529	Motor / Start Capacitor
21	037267	Screw (4 required)
22	037268	Wind Guide
23	038530	PCB Board
24	038543	Screw (4 required)
25	038532	Screw (2 required)
26	038533	Spring Washer (2 required)
27	038531	PCB Board Frame
28	038541	3.75" Blue Lead (2 flag terminal)
29	038542	6" Red Lead (1 flag terminal)
30	038538	7.5" Blue Lead (1 flag terminal)

Illustration#	Part#	Description
31	038539	7.5" Black Lead (1 flag terminal)
32	038540	7.5" White Lead (1 flag terminal)
33	037280	9.5" White Lead (2 flag terminals)
34	037286	10"25 Green/ Yellow Lead Assembly
35	037282	11" White Lead (1 flag terminal)
36	038537	13" Blue Lead (1 flag terminal)
37	037267	Screw (2 required)
38	037269	Lock Washer (2 required)
39	037270	Washer (2 required)
40	037272	Cord Clamp
41	037273	Screw
42	503622	Cordset Assembly
43	037287	Reset Switch
44	037274	Bottom Plate
45	037275	Screw (4 required)

